

NO.	WEST HOPKINS	FG-FGA	FT-FTA	REB	P	TP	A
30	TAMMY RATJEFF	1-5	0-0	2	3	2	2
34	RUTH MARTELL	1-1	0-0	0	0	2	0
25	SUZETTE HUGHES	3-5	7-9	5	1	13	1
40	TIMMY MENOR	2-5	1-5	8	1	5	0
32	CODY LEWIS	0-1	0-0	1	3	0	0
23	ROBBIE REARICK	0-1	0-1	2	1	0	0
20	THERESA DAVOLSON	0-2	0-0	2	2	0	0
54	JANIE COAKLEY	1-2	0-0	3	2	2	0
TOTALS		8-23	8-15	24	13	24	3

NO.	LESLIE COUNTY	FG-FGA	FT-FTA	REB	P	TP	A
14	LESLIA SKZEMPIRE	1-3	0-0	1	1	2	2
10	WETA VALENTINE	1-4	0-0	0	2	2	1
31	MARKEY HARVEY	1-2	0-0	4	3	2	0
15	SHELIA SKZEMPIRE	1-3	1-3	1	3	3	0
12	PAMI VALENTINE	1-9	2-4	8	1	4	2
33	CHERYL LEWIS	0-4	6-6	3	1	6	0
55	DRUELLA WOODS	0-0	2-3	4	2	2	0
25	LISA BAKER	0-0	0-0	0	0	0	0
TOTALS		5-25	11-16	22	13	21	5

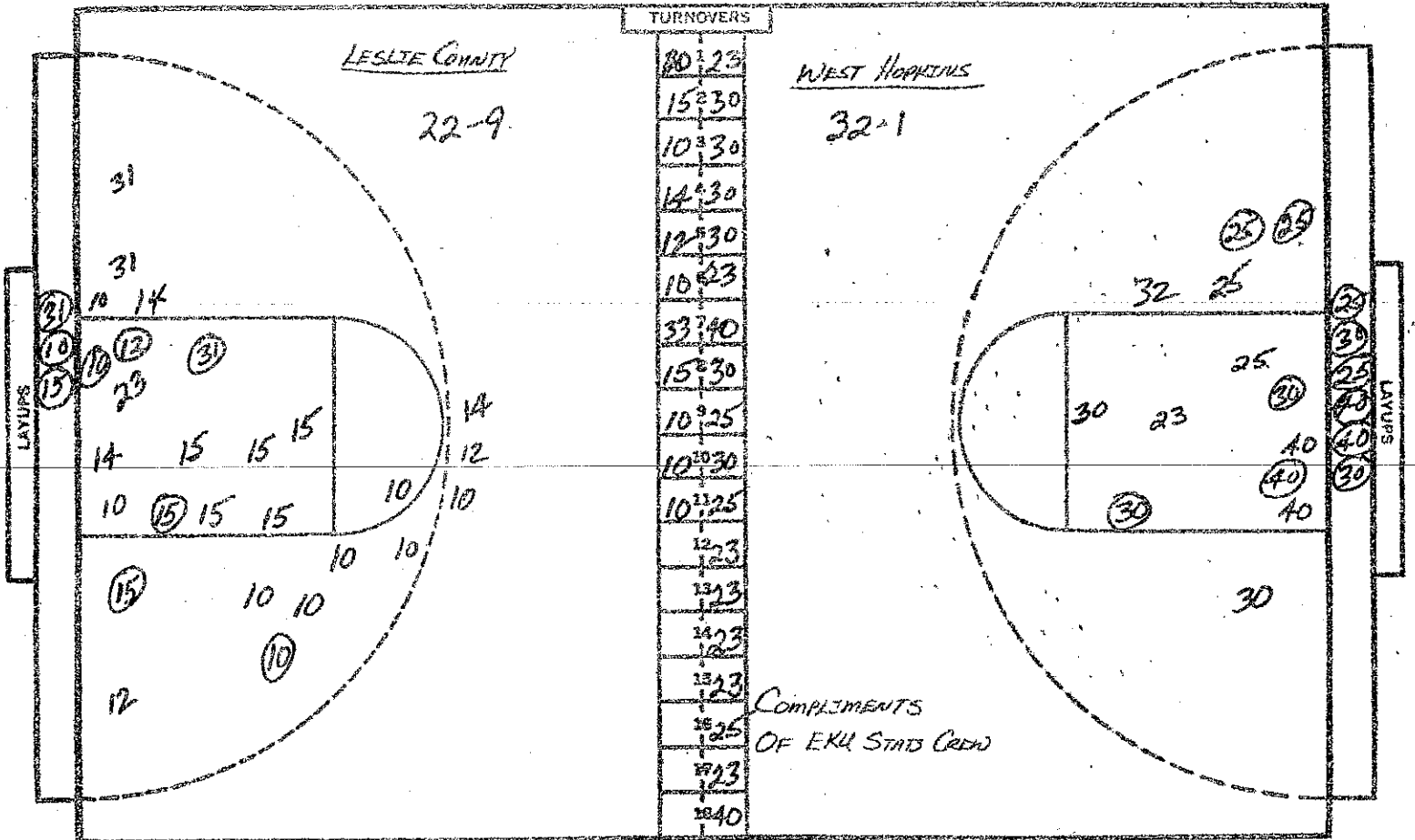
PERCENTS 34.8 53.3 0 TEAM REBOUNDS (NOT IN TOTAL)

PERCENTS 20.0 68.8 1 TEAM REBOUNDS (NOT IN TOTAL)

WEST HOPKINS
20-M 253

LESLIE COUNTY
5-16-21

SOURCES
DATE BY MONDED
OFFICIAL
ATTORNEYS



NO.	LESLIE COUNTY	FG-FGA	FT-FTA	REB	P	TP	A
14	LESTA SIZEMORE	1-6	0-0	2	2	2	3
10	NITA VALENTINE	4-15	1-3	1	2	9	2
31	NANCY HORNBY	3-6	1-2	5	5	7	0
15	SHEILA SIZEMORE	4-10	3-5	7	3	11	1
12	PAM VALENTINE	2-12	2-6	9	2	6	3
33	CHERYL LEWIS	0-4	6-6	3	1	6	0
55	DRUELLA WOODS	0-0	2-3	6	2	2	1
25	LISA BAKER	0-0	0-0	0	0	0	0
23	SAUDY SIZEMORE	0-1	0-0	1	1	0	0
		-	-				
		-	-				
		-	-				
		-	-				
		-	-				
		-	-	2	D.B.		
TOTALS		14-54	15-25	36	18	43	10

PERCENTS 25.9 60.0 2 TEAM REBOUNDS (NOT IN TOTAL)

NO.	WEST HOPKINS	FG-FGA	FT-FTA	REB	P	TP	A
30	TAMMY RATLIFF	5-14	0-1	7	3	10	5
34	RUTH MARTELL	1-1	0-0	0	0	2	0
25	SUZETTE HUGHES	7-11	8-11	10	4	22	1
40	TAMMY MEADOR	5-10	1-5	10	1	11	1
32	STUDY LEWIS	0-2	0-0	1	3	0	0
23	ROBYN BEARDEN	0-1	0-2	9	3	0	0
20	THERESA DOWNING	0-3	0-0	5	4	0	0
54	JANIE COAKLEY	1-2	0-0	3	2	2	0
		-	-				
		-	-				
		-	-				
		-	-				
		-	-				
		-	-	1	D.B.		
TOTALS		19-44	9-19	46	20	47	7

PERCENTS 43.2 47.4 1 TEAM REBOUNDS (NOT IN TOTAL)

LESLIE COUNTY

SCORE BY HALVES: 5-16-9-13 = 43

OFFICIALS: DARRELL BOGAR-HARRY, DOTTIE BROTHERS-LOUISVILLE

ATTENDANCE: 3RD SESSION 3100 EST.

WEST HOPKINS

10-14-13-10 = 47